
DRAFT ERSA Procedures (for Consultation)

Changes/Additions Highlighted in grey

YSSY FAC

GEORGES RIVER 5 - INBOUND

TR via CHOPPERS SOUTH (Intersection of two creeks enclosing a sewerage treatment works, 2.1NM S of BK) to Picnic Point, thence via the Georges River to Dolls Point; ALT 1,000FT. E of the Georges River Bridge descend to 500FT; then track via the western shore of Botany Bay to ABM the Brighton Novotel, remaining over water. Clearance Limit: The Brighton Novotel. Contact TWR 120.5 at the Georges River Bridge.

Note: Aircraft arriving/departing Bankstown to the South East overfly this route at 1,500FT. Refer YSBK FAC entry for details.

GEORGES RIVER 5 - OUTBOUND

TR via the western shore of Botany Bay to Dolls Point, remaining over water at all times; ALT 500FT; then via the Georges River to Picnic Point. W of Captain Cook Bridge climb to 1,000FT. FM Picnic Point TR to CHOPPERS SOUTH (Intersection of two creeks enclosing a sewerage treatment works, 2.1NM S of BK). Contact BK Tower 132.8 approaching Picnic Point.

Note: Aircraft arriving/departing Bankstown to the South East overfly this route at 1,500FT. Refer YSBK FAC entry for details.

YSBK FAC

Flight Procedures Insert new section 7 and renumber remaining paragraphs

7. DEPARTURES AND ARRIVALS TO SOUTH EAST

a. Engadine Outbound:

- i. TR via Revesby Station to Casuarina Oval, thence to Woronora Cemetery ALT 1,500FT and remaining clear of the YSSY CTR.
- ii. Aircraft should monitor BK TWR 132.8 until clear of Engadine corridor.

b. Engadine Inbound:

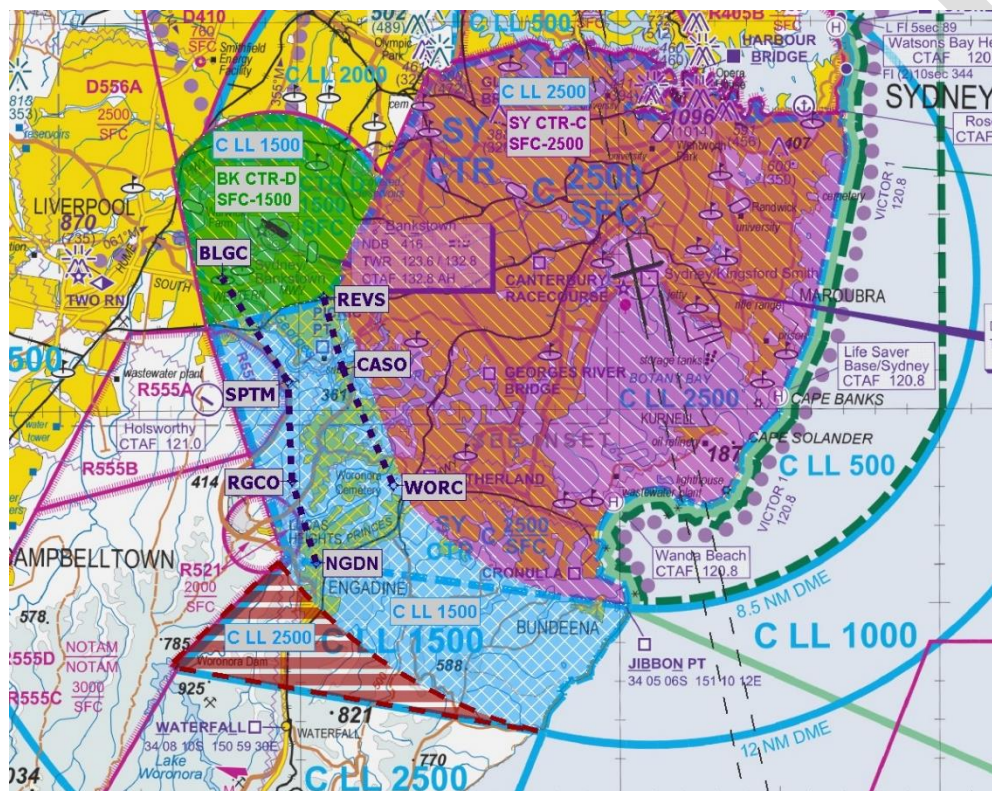
- i. Prior to Engadine contact BK TWR 132.8. If advised of a delay or to remain outside controlled airspace, aircraft should hold south east of Engadine remaining clear of R521 and R555 to avoid outbound traffic.
- ii. TR via Engadine to Ridge Golf course ALT 1,500FT, thence to Sandy Point mine remaining East of Heathcote Rd to avoid R555F.
- iii. Aircraft are to report overhead Sandy Point mine for circuit entry instructions.
- iv. From Sandy Point mine track to the Brighton Lakes Golf club remaining East of Heathcote Rd. From Brighton Lakes join the circuit as directed by ATC.

Note1: During YSSY RWY 07/25 operations aircraft arriving/departing from YSSY may be less than 1,000FT above the base of controlled airspace. Aircraft operating on the Engadine outbound/inbound routes during YSSY RWY 07/25 operations should be aware of the increased wake turbulence risk.

Note2: Helicopters transiting between Bankstown and Sydney operate below this route below 1,000FT. Refer YSSY FAC entry for details.

Waypoint Definitions

Full Name	WYPT Type	Abbreviation	Position
Engadine	VFR Approach Pt	NGDN	34° 3'58.56"S 151° 0'40.27"E
Ridge Golf Course	Tracking Pt	RGCO	34° 1'52.60"S 150°59'55.45"E
Sandy Point Mine	Tracking Pt	SPTM	33°59'18.56"S 150°59'48.27"E
Brighton Lakes Golf Club	Tracking Pt	BLGC	33°56'39.01"S 150°57'45.09"E
Revesby Station	Tracking Pt	REVS	33°57'8.93"S 151° 0'53.62"E
Casuarina Oval	Tracking Pt	CASO	33°58'59.46"S 151° 1'29.26"E
Woronora Cemetery	Tracking Pt	WORC	34° 1'58.99"S 151° 3'4.04"E



- ENROUTE REPORTING POINT ▲ (Compulsory)
- ENROUTE REPORTING POINT △ (As required)
- CHECK POINT □ (When requested by ATC)
- VFR APPROACH POINT ◀
- TRACKING POINT ■