

**AIP SUPPLEMENT  
(SUP)****AIRAC****H49/26****Effective: 202607081600 UTC**

AERONAUTICAL INFORMATION SERVICE,  
AIRSERVICES AUSTRALIA, GPO BOX 367,  
CANBERRA ACT 2601

For **DISTRIBUTION** queries, contact:  
Email: [aim\\_editorial@airservicesaustralia.com](mailto:aim_editorial@airservicesaustralia.com)

For **CONTENT** queries regarding this SUP, contact:  
Email: [oar@casa.gov.au](mailto:oar@casa.gov.au)

## **BANKSTOWN SOUTHEAST VFR ROUTE AND CODED CLEARANCE**

### **1. INTRODUCTION**

- 1.1 The Civil Aviation Safety Authority (CASA) and Airservices Australia (Airservices) established the Bankstown Joint Airspace and Procedures Analysis Team (JAPAT) and the more recently established Bankstown Airspace Conflict Management (BACM) Group, comprised of subject matter experts, to cooperatively identify and assess safety risks associated within and adjacent to the Bankstown airspace.
- 1.2 Feedback received from operators was considered and a further option to exit the BK CTR was explored. This option seeks to alleviate some traffic congestion on the western and northern edges of the amended BK CTR.
- 1.3 To ease this situation the OAR, with the assistance of Airservices and BACM, have proposed that a one-way VFR route, named the **WORONORA OUTBOUND** to be established to the southeast of the BK CTR within the reclassified portion of the SY CTR (*refer to para 1.4*).
- 1.4 The proposed change aims to reduce airspace risk by establishing a daytime-only VFR route (HJ) and associated procedures to the southeast of the BK CTR. This will be achieved by reclassifying part of the SY CTR from Class C to Class G (SFC–1,000FT) and Class D (1,000–1,500FT), with the route contained within the Class D CTA. A further portion of the SY CTR South of the Class D step will be reclassified as Class G SFC-1,500FT extending the existing 1,500FT Class G airspace (*see Figure 1 below*).
- 1.5 This change to operations will be published within the En Route Supplement Australia (ERSA) for YSBK. The route will also be published on the Sydney Visual Terminal Chart (VTC) and Sydney Visual Navigation Chart (VNC).

## 2. BANKSTOWN SOUTHEAST VFR ROUTE – AIRSPACE AND ERSA CHANGES

### 2.1 OPERATIONAL INFORMATION - DAH

#### 2.1.1 DAH SECTION 2 – CONTROL ZONES C (*amended text*)

##### **YMMM/SYDNEY CONTROL ZONE (C)**

**LATERAL LIMITS:** 335417S 1510237E - 335125S 1510414E

then along the counterclockwise arc of a circle radius 0.40NM centre

335103S 1510425E - 335104S 1510454E -

335037S 1510654E - 335030S 1510714E -

335037S 1510748E then along SY HarbourA - 335120S 1511228E

then along SY HarbourB - 335224S 1511446E -

335222S 1511704E then along SY COAST 4 - 335334S 1511706E -

335807S 1511557E - 335935S 1511508E -

335936S 1511457E - 335940S 1511456E -

335945S 1511456E - 335949S 1511501E -

340006S 1511500E - 340108S 1511348E

then along SY COAST 5 - 340204S 1511331E -

340206S 1511320E - 340207S 1511319E -

340214S 1511321E then along SY COAST 6 - 340220S 1511011E -

340221S 1510948E - 340223S 1510946E -

340234S 1510946E then along SY COAST 7 - 340417S 1510922E -

340434S 1511004E then along SY COAST 8 - 340505S 1511015E -

340451S 1510817E then along the clockwise arc of a circle radius 8.50NM  
centre 335638S 1511057E (SY/DME) - 340232S 1510336E -

340119S 1510307E - 335705S 1510125E - 335621S 1510128E -

335417S 1510237E

**VERTICAL LIMITS:** SFC - 1500

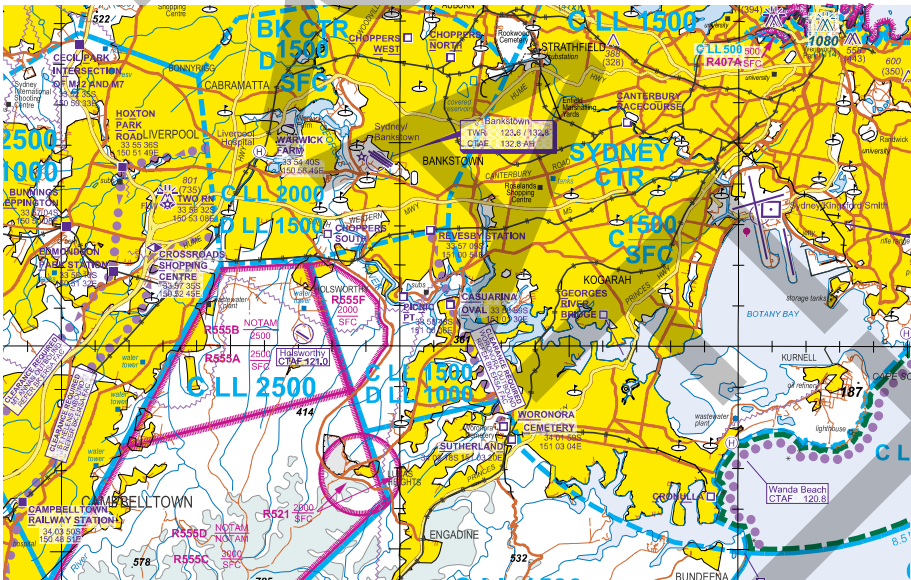
**HOURS OF ACTIVITY:** H24

**CONTROLLING AUTHORITY:** Airservices Australia

2.1.2 DAH SECTION 6 CONTROLLED AIRSPACE D (*added text*)**YMMM/SYDNEY CTA D1****LATERAL LIMITS:** 335753S 1505719E - 335705S 1510125E -

340119S 1510307E - 340206S 1505901E -

340105S 1505837E - 335753S 1505719E

**VERTICAL LIMITS:** 1000 - 1500**HOURS OF ACTIVITY:** H24**CONTROLLING AUTHORITY:** Airservices Australia**2.2 OPERATIONAL INFORMATION - AIP Charts**2.2.1 Sydney Visual Terminal Chart (VTC) and Sydney Visual Navigation Chart (VNC) (*Area below amended*)**Figure 1: Chart for illustrative purposes only**

## 2.2.2 Refer to Appendices 1 - 7 for the AIP charts and Appendix 8 for the Sydney General Flying Guide.

## 2.3 OPERATIONAL INFORMATION - ERSA

### 2.3.1 NEW ERSA VFR WAYPOINTS

WAYPOINT	STATE	CODE	LATITUDE	LONGITUDE
Revesby Station	NSW	REVS	335708.93S	1510053.62E
Casuarina Oval	NSW	CASO	335859.46S	1510129.26E
Woronora Cemetery	NSW	WORC	340158.99S	1510304.04E

### 2.3.2 ERSA SYDNEY/BANKSTOWN (YSBK) FAC - FLIGHT PROCEDURES

#### 5.5.7c Departing tracking requirements

*Add the below text*

#### **RWY 29**

Via Revesby Station (REVS)

- (i) Follow ATC instructions
- (ii) At REVS track via Woronora Outbound (*see 5.6.4*)
- (iii) Leaving BK CTR and entering SY CTA D, Contact BK APP 125.8

#### **RWY 11**

Via Revesby Station (REVS) entering SY CTA D

- (i) Follow ATC instructions
- (ii) At REVS track via Woronora Outbound (*see 5.6.4*)
- (iii) Leaving BK CTR and entering SY CTA D, Contact BK APP 125.8

### 5.6. CODED CLEARANCES from BANKSTOWN to CLASS D CTA

*Add the below text*

#### 5.6.4 (SOUTHEAST) WORONORA OUTBOUND

Track via the applicable departing circuit procedure then via Revesby Station (REVS), Casuarina Oval (CASO), Woronora Cemetery (WORC) at 1,500FT. Leaving CLASS D CTA Control and Identification Services Terminated, Squawk 1200, FREQ change approved.

Special Procedures for Woronora Outbound.

When RWY07 is in use at YSSY, wake turbulence separation of 1,000FT from super heavy aircraft is not achievable on the Woronora Outbound. Expect delays.

*Amend the below text*

### **8. IFR arrivals and departures to the South and Southeast**

a. Pilots are reminded that R555A, R555F and R521 has RA3 conditional status and a clearance issued by ATC:

(i) Into Class C and D airspace on DEP FM BK; or

(ii) To leave Class C and D airspace on descent to BK does not authorise entry into this RA.

### **3. CANCELLATION**

3.1 This SUP will be cancelled when it is incorporated into AIP ERSA, DAH, and Charts expected 26 November 2026.

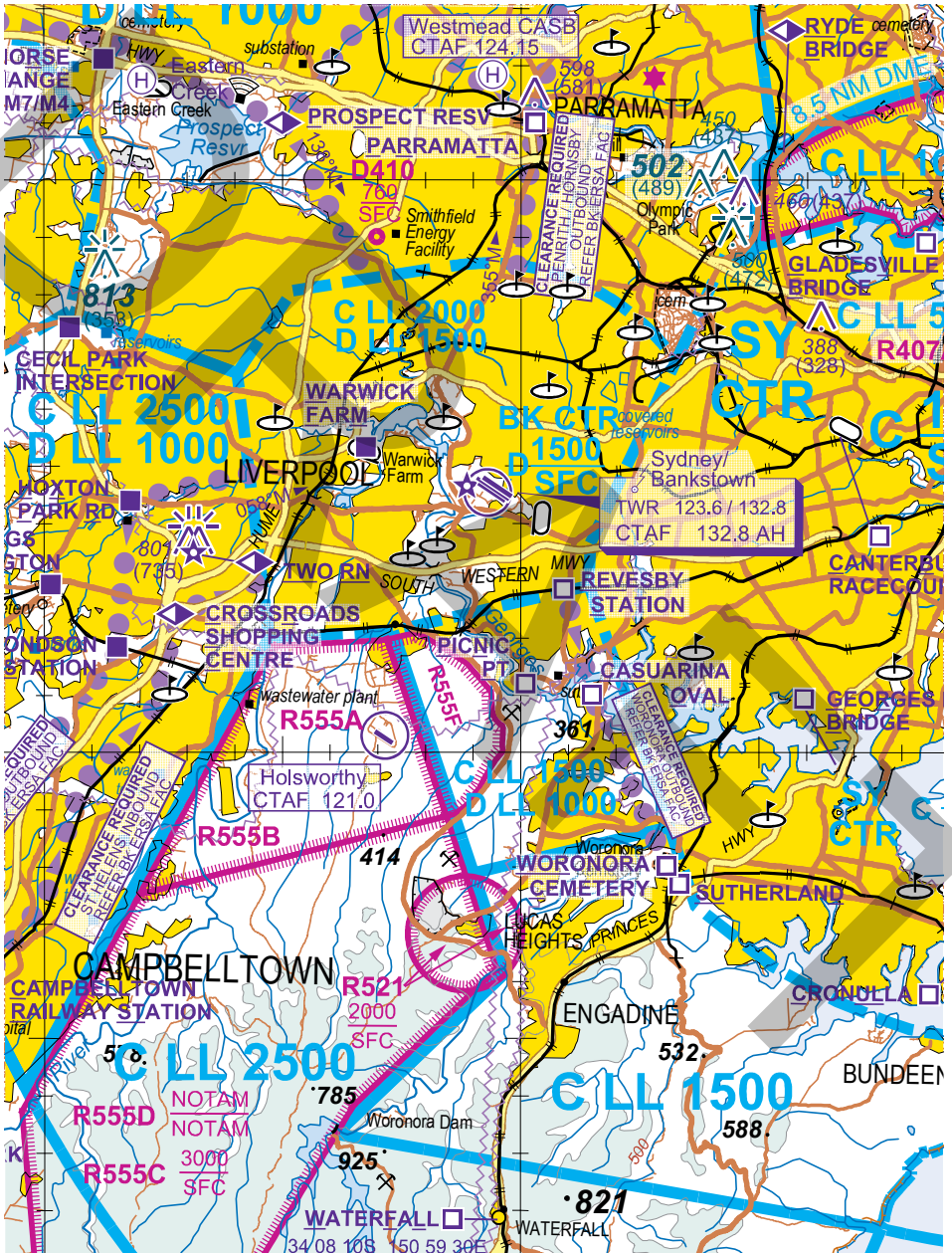
### **4. DISTRIBUTION**

4.1 Airservices Australia website only.

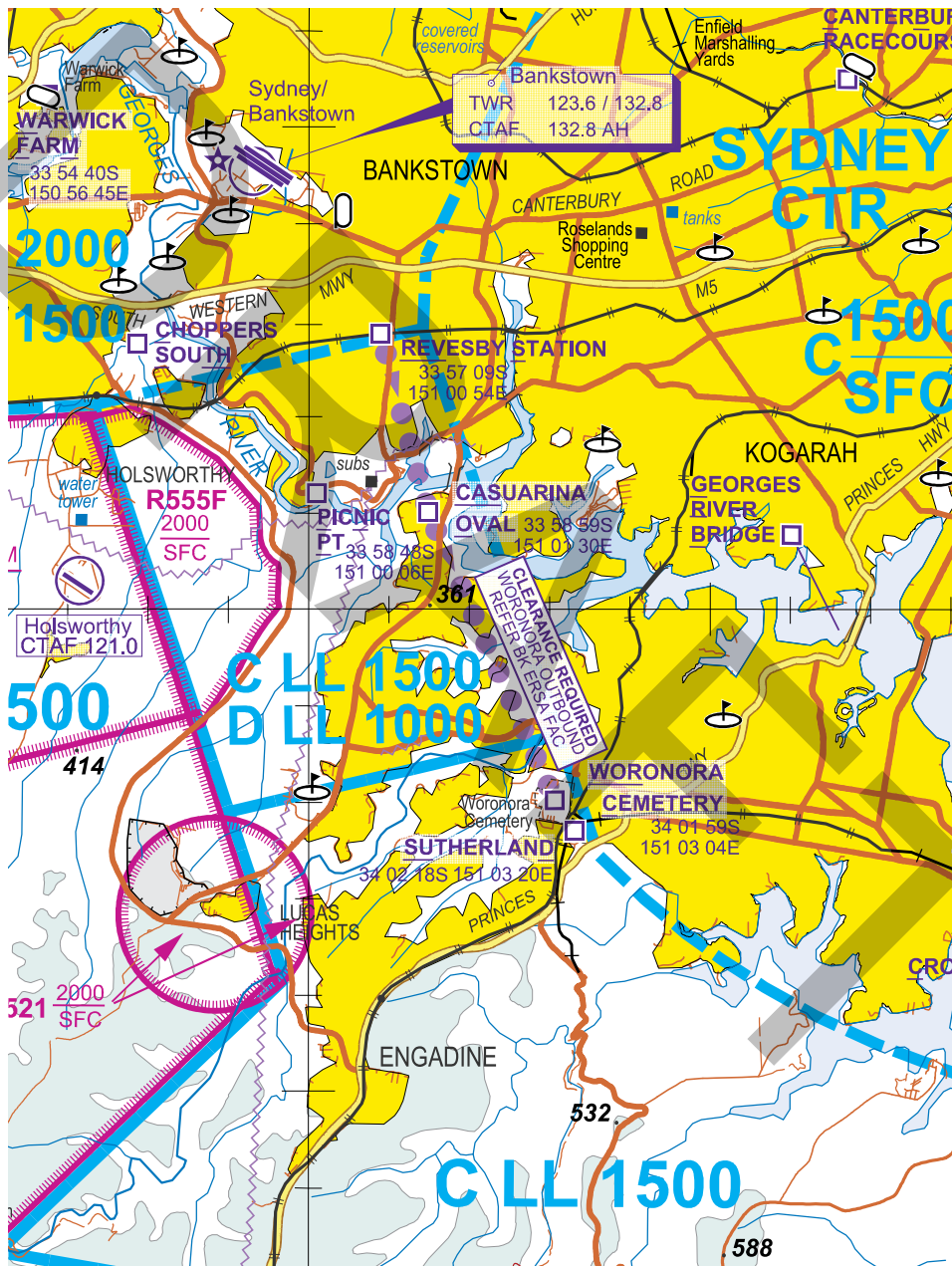
### **Appendices**

1. Sydney Visual Terminal Chart (VTC)
2. Sydney Visual Terminal Chart (VTC) inset
3. Sydney Visual Navigation Chart (VNC)
4. Canberra/Sydney Terminal Area Chart (TAC)
5. Williamtown/Sydney Terminal Area Chart (TAC)
6. En Route Chart (ERC) Low 2
7. En Route Chart (ERC) Low 3
8. Sydney General Flying Guide

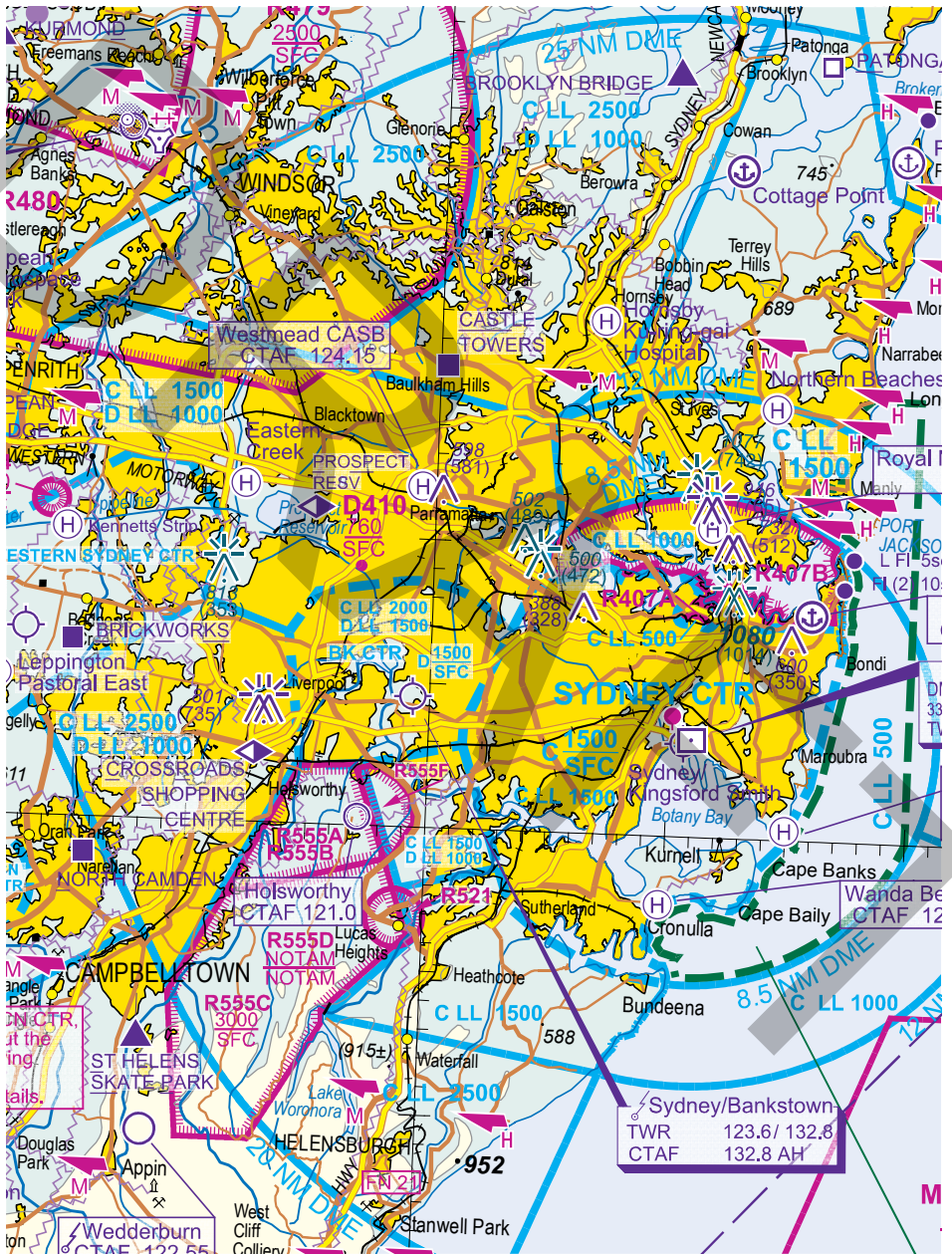
1. Sydney Visual Terminal Chart (VTC)



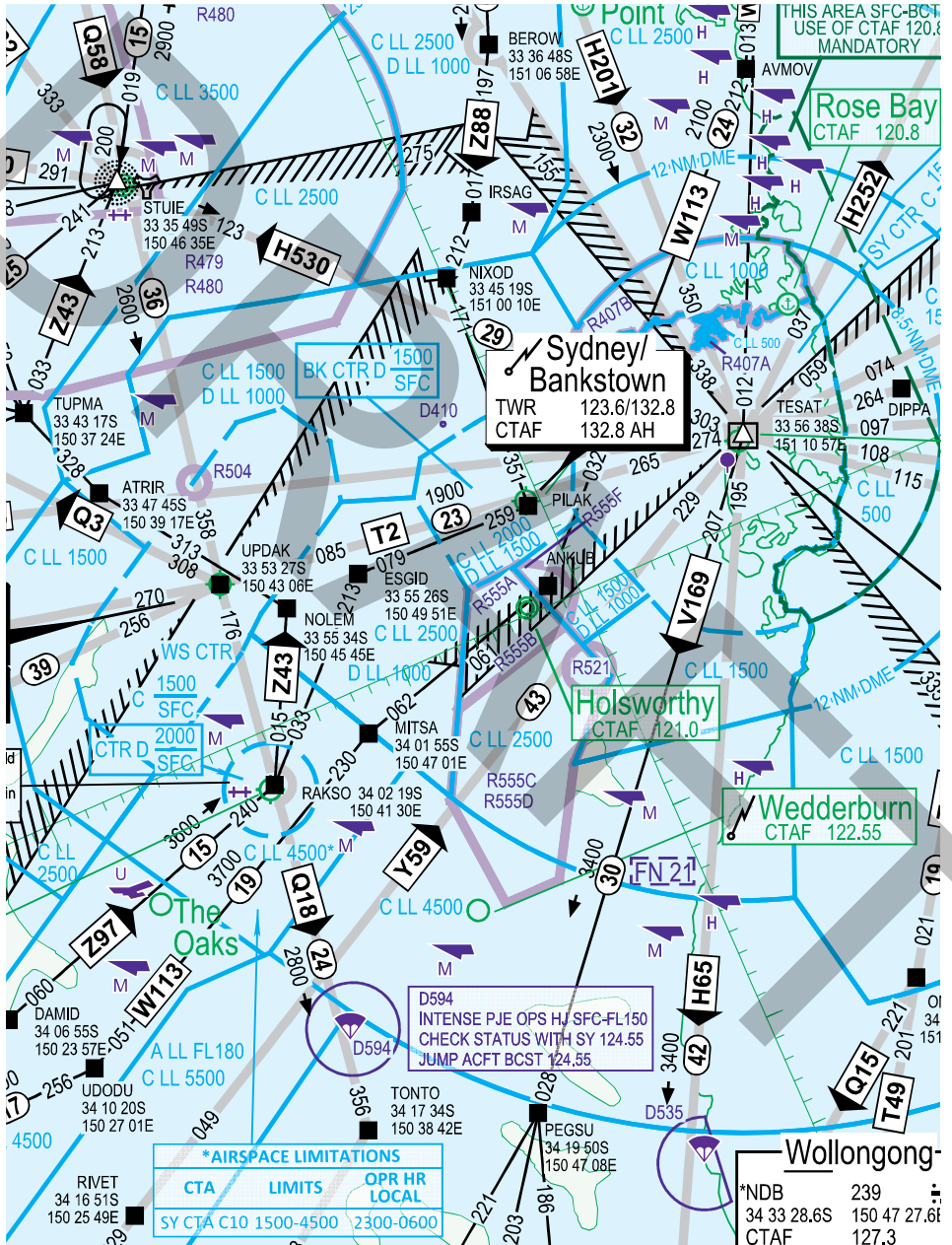
**2. Sydney Visual Terminal Chart (VTC) insert**



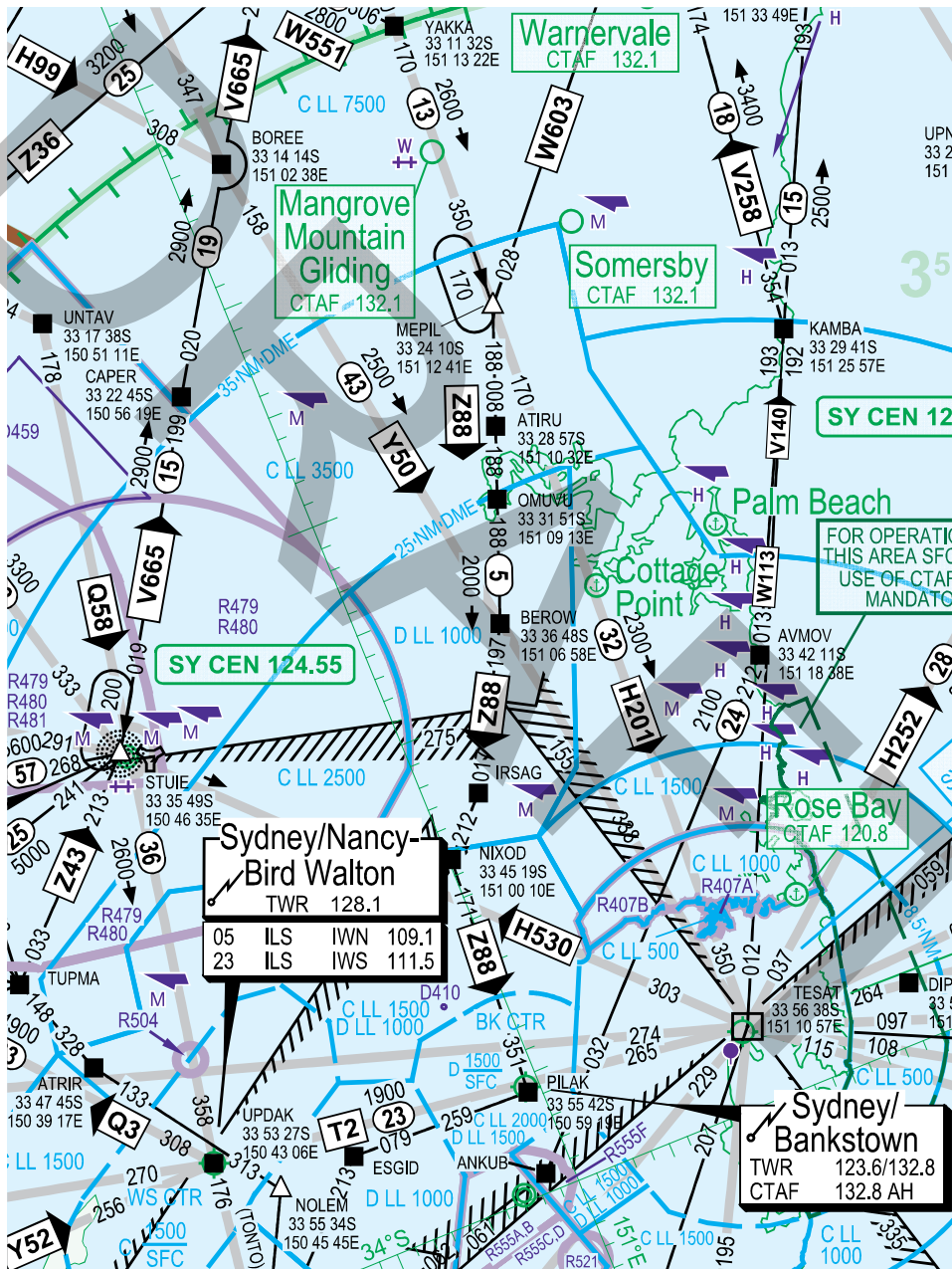
**3. Sydney Visual Navigation Chart (VNC)**



**4. Canberra/Sydney Terminal Area Chart (TAC)**

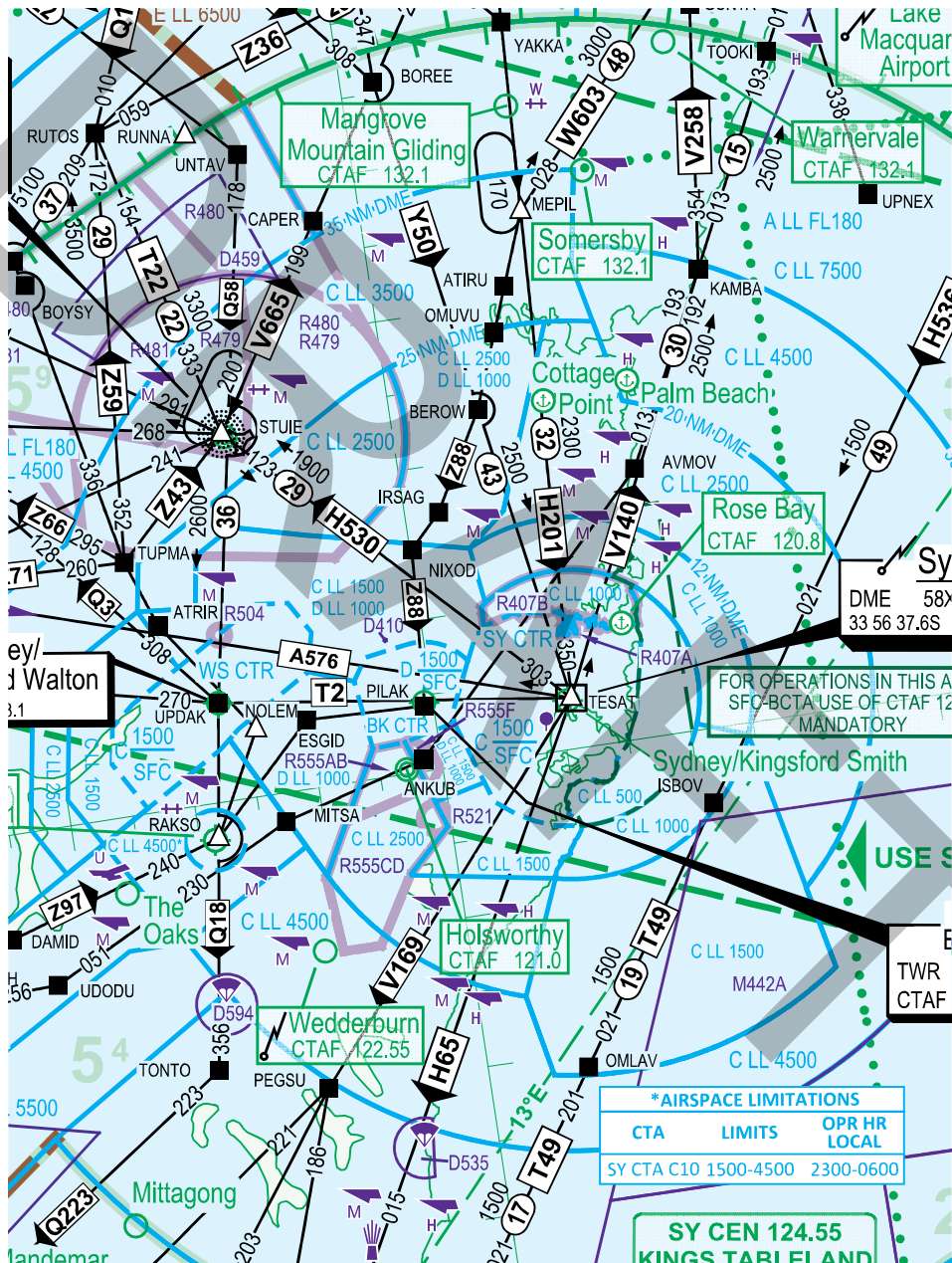


**5. Williamstown/Sydney Terminal Area Chart (TAC)**





**7. En Route Chart (ERC) Low 3**



*AIRSPACE LIMITATIONS		
CTA	LIMITS	OPR HR LOCAL
SY CTA C10	1500-4500	2300-0600

**SY CEN 124.55**  
**KINGS TARI FLAND**

**8. Sydney General Flying Guide**

